



MyoSPECT

gehealthcare.com



GE HealthCare

Get to the heart of every challenging case

Cardiac procedures now account for over 50 percent of all nuclear medicine studies in the U.S.¹ As the number of challenging cardiac patient cases grows, there's a real need for cardiac-specific imaging solutions. This is why we built MyoSPECT™, a cardiac-dedicated SPECT designed and engineered from the inside out by the same manufacturer to accurately see the story in every heartbeat.

MyoSPECT combines our exclusive stationary detector complete with our own CZT module design and delivers two attenuation compensation solutions, automated motion correction on Xeleris™ and absolute myocardial blood flow readings. From form to function to the future, there has never been a more complete solution for cardiac imaging.



Extended FOV processing for a 76% increase in FOV volume²

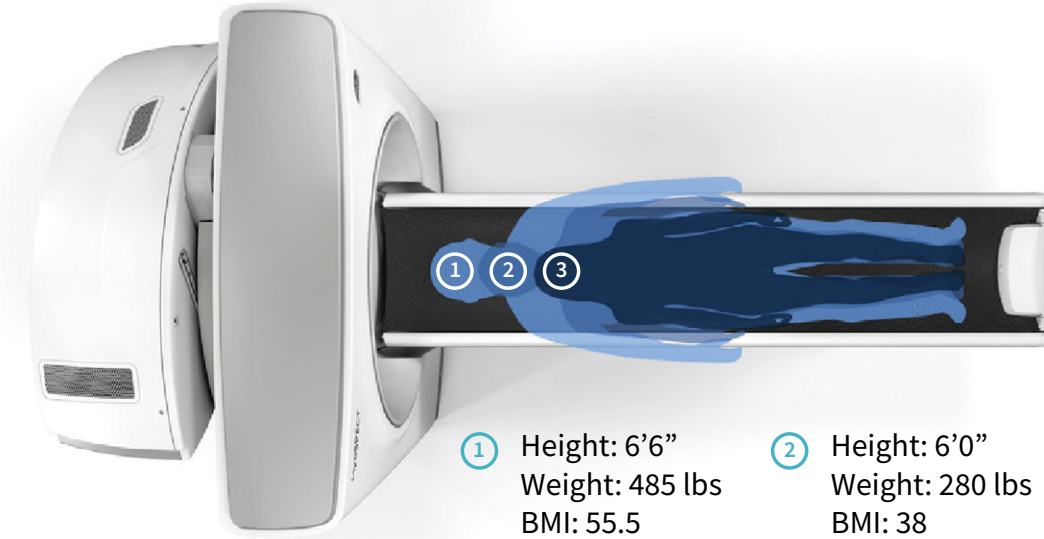
Smart Positioning workflow for automated scan position and FOV recommendations

Two different attenuation compensation solutions

True dynamic imaging with SPECT Flow

A perfect fit for today's practice of cardiology

MyoSPECT was designed with the same focused attention to the heart that defines the entire practice of cardiology. With extended field-of-view processing and a more capable table, that's also wider², it comfortably accommodates all patients, large and small, with a complete picture of their heart. It's the right balance of comfort and quality to fit your practice.



- ① Height: 6'6"
Weight: 485 lbs
BMI: 55.5
- ② Height: 6'0"
Weight: 280 lbs
BMI: 38
- ③ Height: 5'6"
Weight: 180 lbs
BMI: 29

Always have their comfort at heart

Your heart patients come to you with physical challenges that can make it difficult to get comfortable. Obese patients may have difficulty balancing their weight on a narrow table or seat and weak patients may not have the energy to sit up through an entire scan. With MyoSPECT, your patients can lie down comfortably on an all-new wider table² design that can accommodate up to 500 pounds.

The view from here is complete

A little extra space is better for everyone, which is why we designed MyoSPECT to provide a 76 percent increase in field-of-view volume². This gives you greater flexibility to position all of your patients, including obese patients. It's a clear, more complete look at every patient's heart.

Extended FOV processing for a 76% increase in FOV volume²

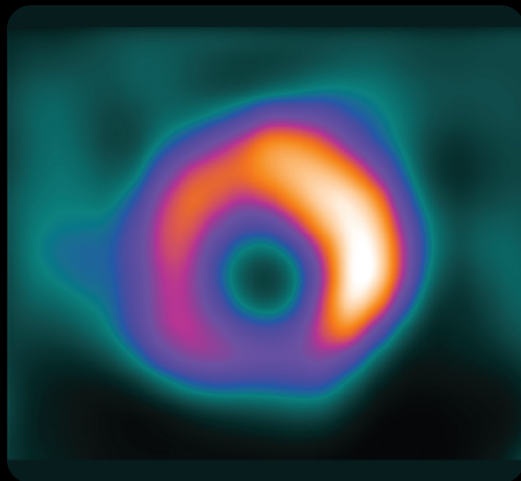
Never miss a beat with CZT

A true negative diagnosis starts with CZT. The excellent energy and spatial resolution of our CZT detector technology is at the heart of every MyoSPECT image. CZT is also incredibly compact, which allowed us to pair it with a novel multi-pinhole collimator design, creating a tomographic imaging arc of the heart with motionless detectors, so every detector is focused on the heart simultaneously. Also, MyoSPECT ES comes with nine detectors, so you can choose the level of performance to meet the needs of your practice.



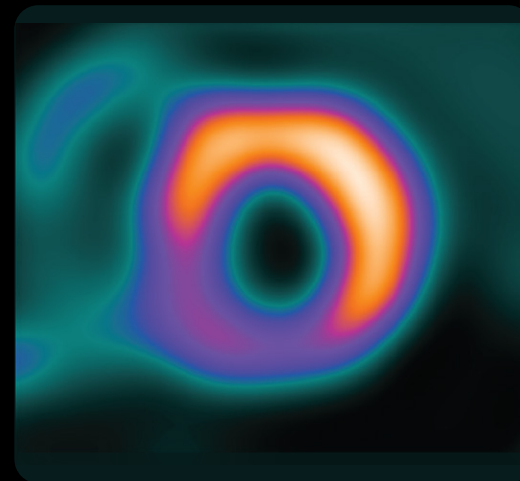
Smart heart imaging solutions

Conventional (NaI)

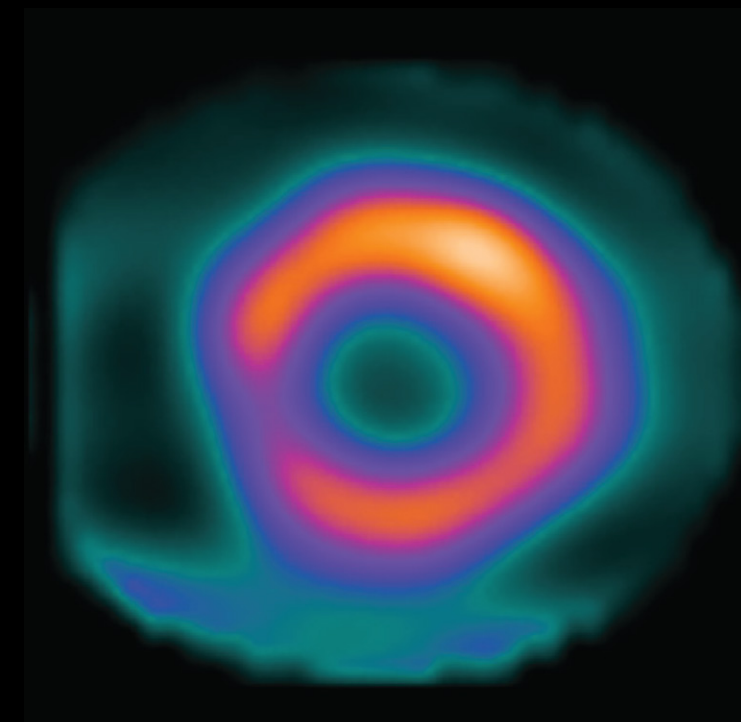


Because every patient is different, there is no one formula for image quality. Everything from positioning, to movement, to a patient's BMI can affect your images. This can be especially challenging for high-throughput environments under pressure to maintain quality across a wide range of patient and exam types. MyoSPECT includes several new automated features that help make it easier to consistently achieve quality results.

MyoSPECT



First, Smart Positioning Workflow is designed to bring your patients to the optimized position for scanning and guides you with prompts to help you get them there quickly. Then, MyoSPECT leverages device-less Alcyone Motion Detection and Correction on Xeleris to generate MotionFree images. With intelligent solutions like these, it's hard not to acquire a quality image with MyoSPECT.



**Smart Positioning
workflow for automated
scan position and FOV
recommendations**

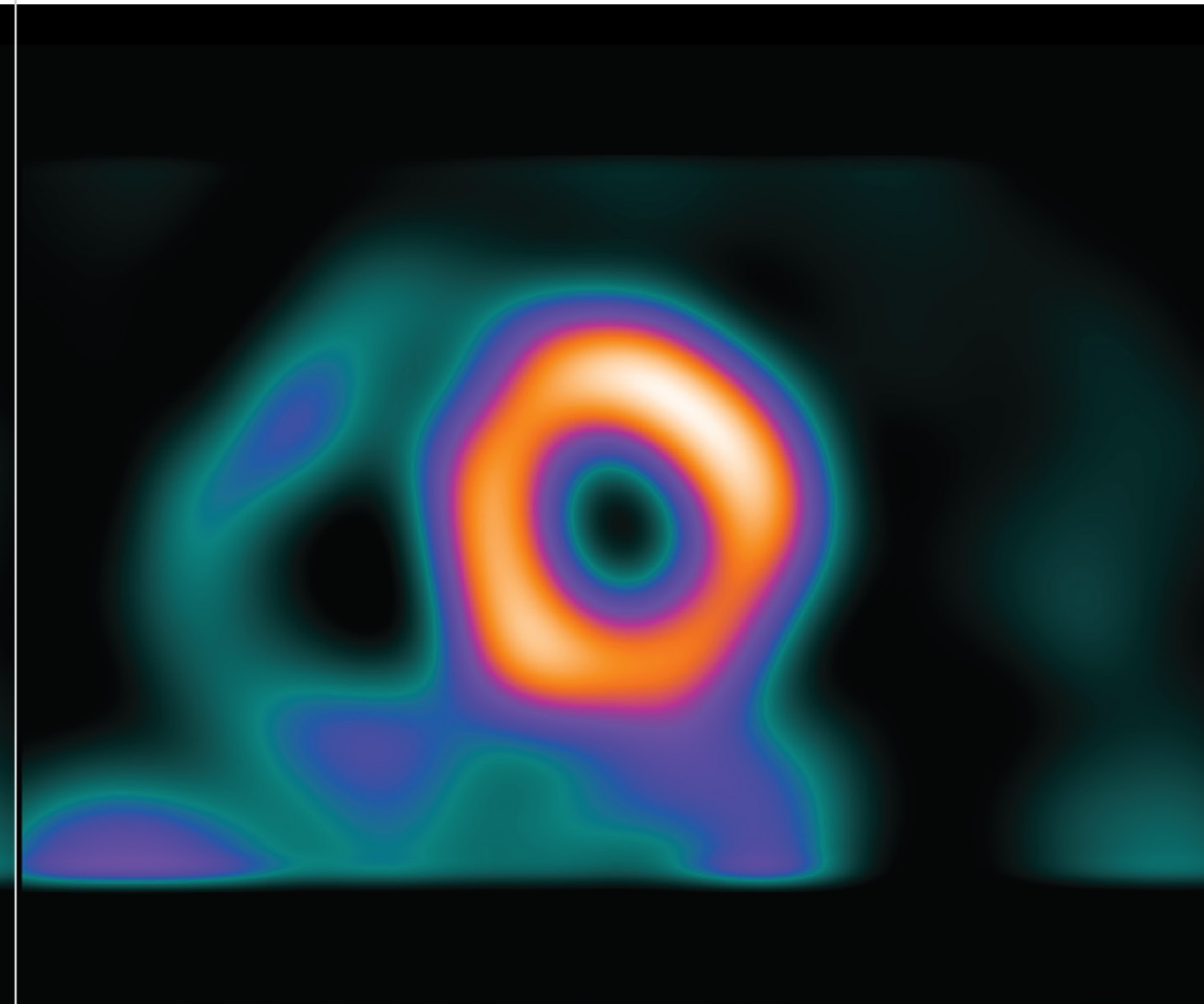
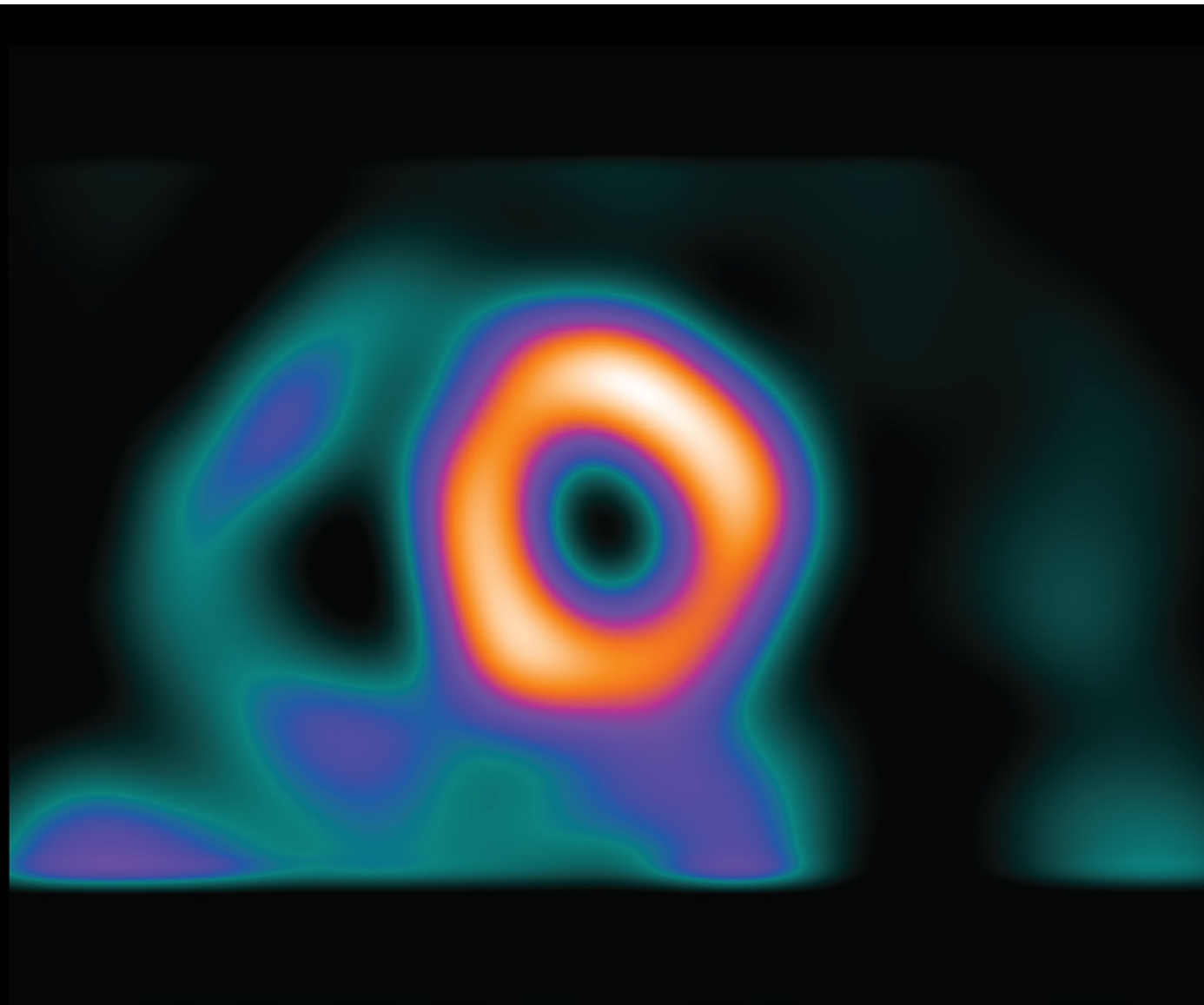
**Two different
attenuation
compensation solutions**

Smart heart imaging solutions

With two out of every 10 SPECT exams resulting in inconclusive stress perfusion³, attenuation correction and evaluation solutions are essential to capturing quality cardiac images. MyoSPECT gives you two options. You can correct attenuation by combining perfusion images with separate CT images on Xeleris. Or, since MyoSPECT uses a table for patient positioning, you can evaluate attenuation artifacts by imaging both prone and supine positions without adding additional radiation exposure. Both options have the added benefit of excellent CZT resolution. No matter which option you choose, you can be sure that nothing will get between you and a clear look at each patient's heart.

Analyze blood flow with absolute clarity

A dedicated cardiac imaging system requires dedicated technology to analyze blood flow. MyoSPECT includes SPECT Flow, which combines dynamic acquisition on MyoSPECT with CFR and absolute myocardial blood flow, should you wish to use an external CT for attenuation correction. All dynamic data processing and corresponding results are derived using Xeleris applications. The stationary design of MyoSPECT is one of the key features that makes SPECT Flow possible.

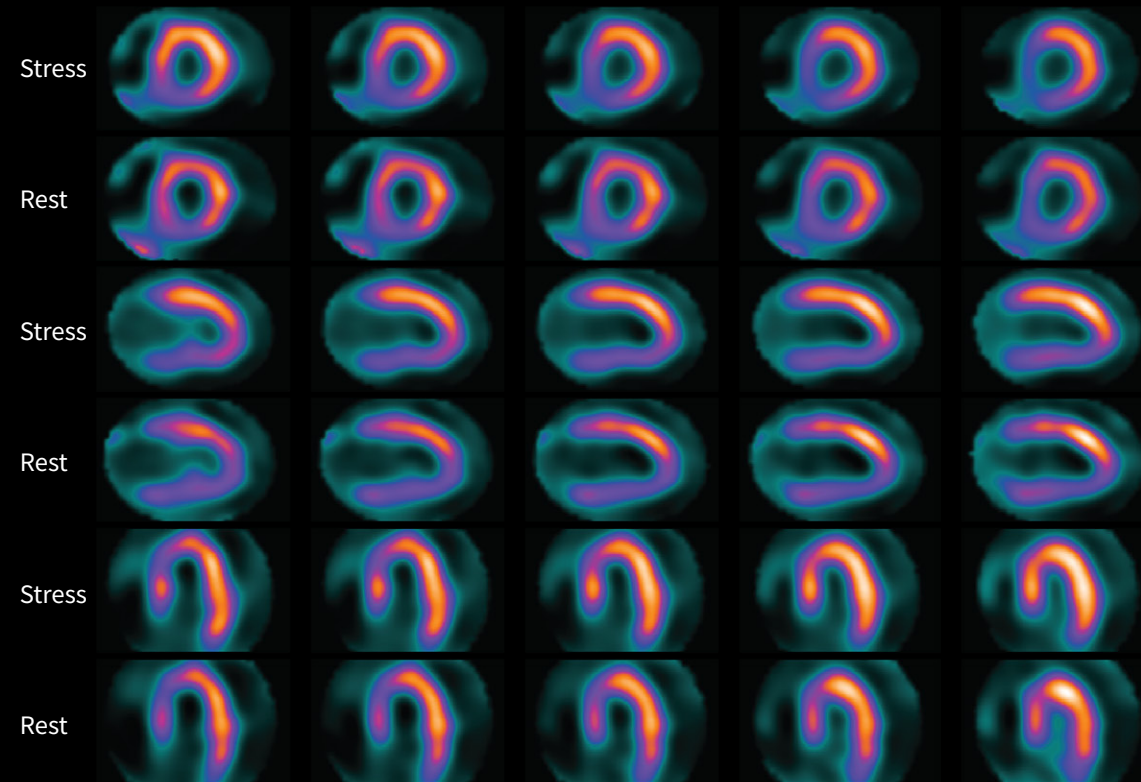


In addition, high sensitivity enables short acquisition times, translating to reduced risk of motion artifacts associated with patient movement. With SPECT Flow, MyoSPECT provides valuable insight into each patient's blood flow for true dynamic cardiac imaging and great diagnostic confidence.

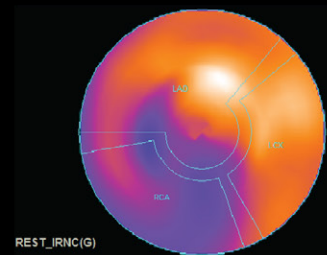
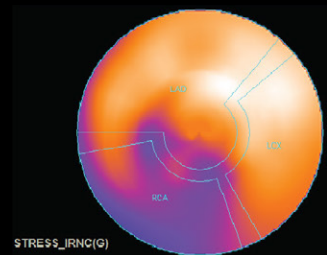
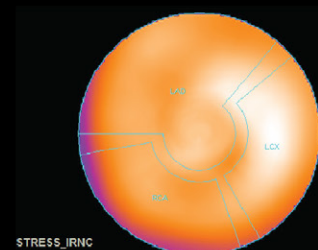
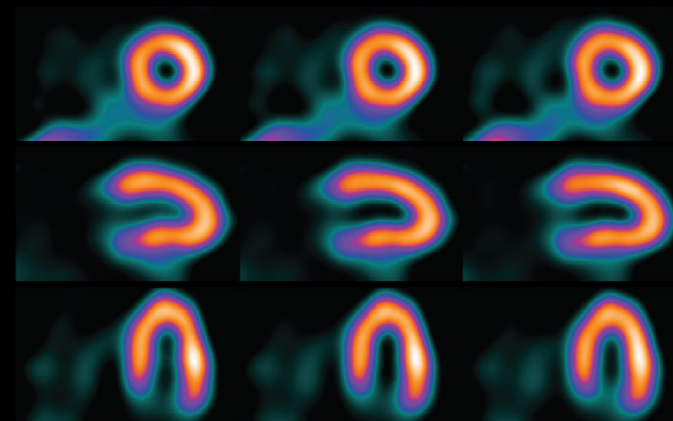
**True dynamic imaging
with SPECT Flow**

Cardiac like you've never seen it before

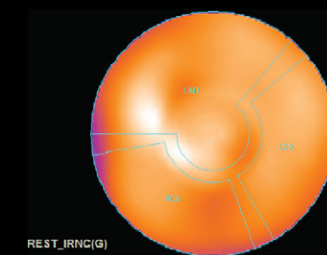
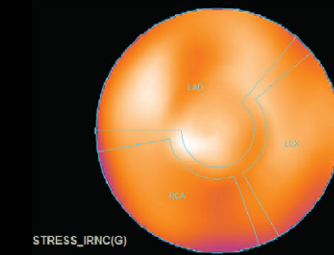
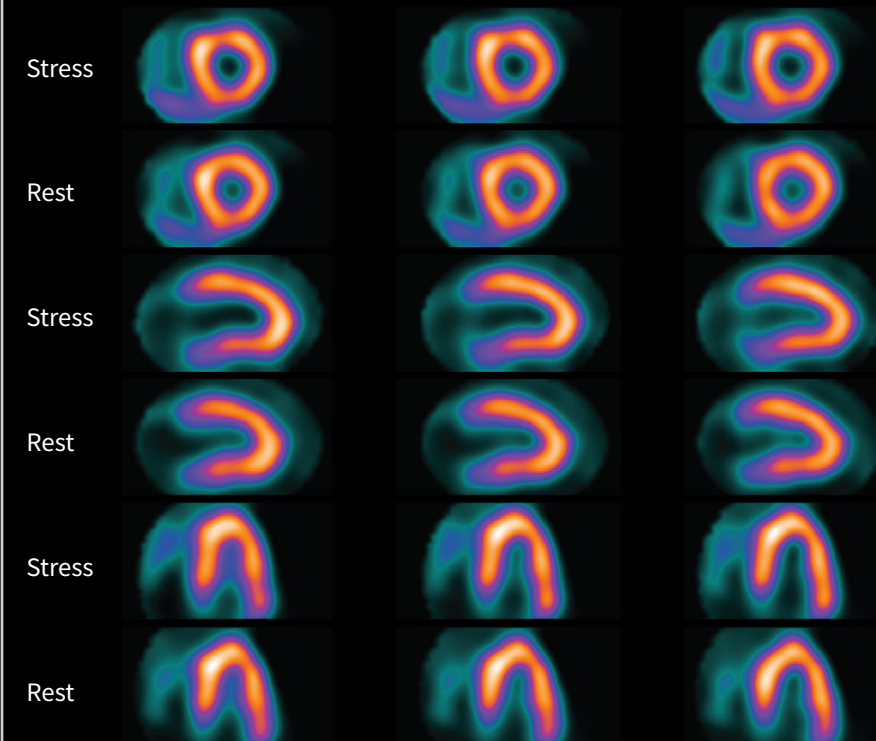
High BMI male patient, abnormal case



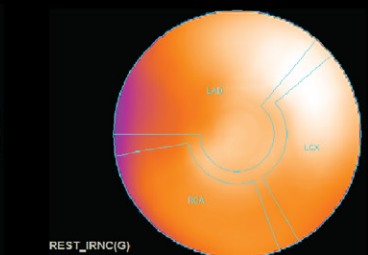
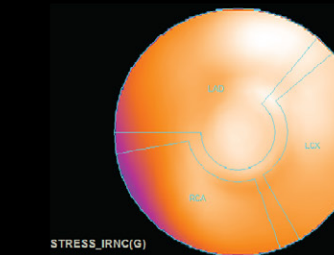
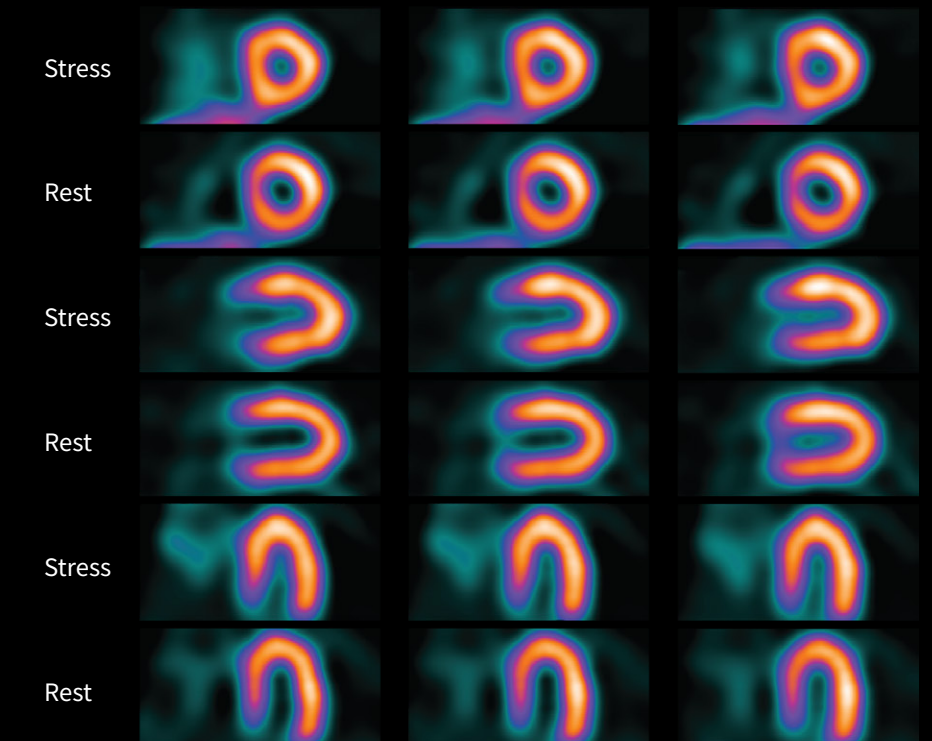
Low dose, stress-only female, patient normal case



High BMI male patient, normal case



Low dose, female patient, normal case





Plan on a future of imaging every patient

An important part of our commitment to advancing cardiac SPECT technology is making it accessible to more people. It requires a thoughtful approach to how your system grows with your practice. With MyoSPECT ES, you have a system built with flexibility. You can start with the essential cardiac imaging performance and add greater capacity and implement Quantitative Flow procedures when you need it. You can be confident that you are making the right investment to meet the needs of the community you serve today with a plan in place for the future.

About GE HealthCare

GE HealthCare is a leading global medical technology, pharmaceutical diagnostics, and digital solutions innovator, dedicated to providing integrated solutions, services, and data analytics to make hospitals more efficient, clinicians more effective, therapies more precise, and patients healthier and happier. Serving patients and providers for more than 100 years, GE HealthCare is advancing personalized, connected, and compassionate care, while simplifying the patient's journey across the care pathway. Together our Imaging, Ultrasound, Patient Care Solutions, and Pharmaceutical Diagnostics businesses help improve patient care from prevention and screening, to diagnosis, treatment, therapy, and monitoring. We are an \$18 billion business with 51,000 employees working to create a world where healthcare has no limits.

Follow us on Facebook, LinkedIn, Twitter, Instagram and Insights for the latest news, or visit our website [gehealthcare.com](https://www.gehealthcare.com) for more information.