



# Venue™ Family Ultrasound Systems\*

Made for **Musculoskeletal Care**



*Simple. Fast. Precise.*

\*Venue Family, as referenced herein, includes Venue™, Venue Go™, and Venue Fit™ systems

# Make fast, musculoskeletal (MSK) assessments and treatment

The Venue Family of Point of Care ultrasound systems deliver simple, fast, and precise ultrasound for every moment. With features like the MSK Tool Kit, the Venue systems help increase efficiency and drive consistency from user to user, Venue Family systems allow you to:

- Diagnose injuries with precision
- Guide treatment to the correct location with technology that aids in needle placement
- Help monitor patient progress and response to therapy with clear and effective tools

Whether you're looking for a cart-based system or an adaptable one that can go from cart to table, there is a versatile, robust, easy-to-use Venue Family system made for you.



# Made for Your MSK

Venue Family ultrasound systems are well-suited for musculoskeletal evaluations wherever you practice. Easy-to-use clinical and workflow tools, and built-in learning help users of all experience levels confidently conduct patient exams and provide treatment.

## Accurately guide and visualize injections with Needle Recognition

With precision needle guidance, the system highlights the needle. This technology helps improve both patient and provider experience.

## Accelerate learning with Scribble

Fast-track training by leveraging a touch-operated pointer and free-drawing capabilities, visible on an external monitor or shared screen.

## Detect and track nerve landmark with cNerve

Useful in evaluating peripheral nerve conditions, cNerve, an AI-based tool, helps you detect and track nerve landmark during live scanning or while reviewing a stored clip.

## Visualize slower blood flows with Power Doppler Imaging (PDI+)

This color flow mapping technique focuses on the signal coming from the flow—enabling improved visualization of slower blood flows, like those found in wrists, ankles, hands, and feet.

## Easily control multiple parameters

With our button probes, you can perform procedures while controlling multiple parameters of the system from the probe without breaking the sterile field. Needle procedures that once required two people can now be done with one.



PDI+



Scribble



MSK Tool Kit



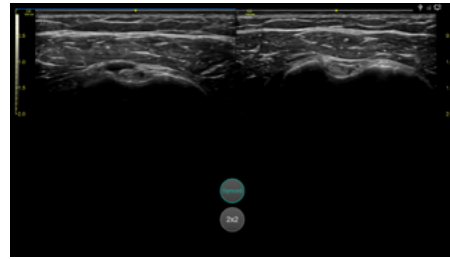
# Keep moving with a simplified workflow

Venue Family systems help eliminate busywork at the Point of Care. Easy documentation and protocol management tools reduce keystrokes, facilitate exam comparison, and streamline image organization for efficient review.



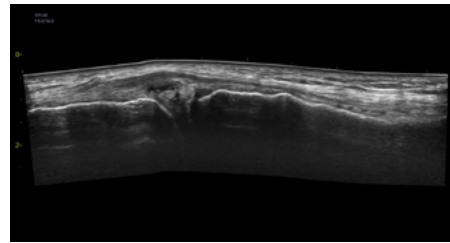
## Simple Screen

Activate Simple Screen mode to remove clutter to view only what you want and increase the ultrasound image by 39% on Venue and 18% on Venue Go and Venue Fit.<sup>1</sup>



## Follow Up

Automatically recalls parameter settings from a previous exam, including comments and body patterns. Also supports monitoring patient treatment response over time, with a side-by-side view of historical and new images.



## Venue View

By constructing a panoramic image from individual frames, Venue View allows you to view up to **60 cm\*** of anatomy with anatomical relationships in one view.



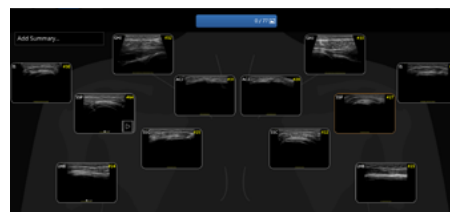
## cNerve

During the scouting phase, use cNerve to identify the nerve landmark and see it highlighted on the image. Helps detect and track the nerve in 99% of cases while scanning or reviewing a stored clip?



## Virtual Convex

Provides a wider field of view so you can visualize larger anatomy structures in a single scan and aims to enhance image quality on linear probes.



## MSK Tool Kit

**Shoulder Diagram** Simplifies shoulder exam documentation and follow-up by fast-tracking image labeling and image storage. Also facilitates patient therapy response by giving you the whole picture over treatment time.

**Reference image** provides anatomy markups to assist novice users in scanning the correct anatomy.

**Bilateral mode** helps you to view the opposite side of the same zone for comparison.

# Quickly visualize anatomy with powerful transducers

A full array of high-frequency imaging probes enable clear assessment of deep and shallow anatomy. **Available probes include:**

## L4-20t-RS

Supports high-frequency imaging of superficial structures while also being able to penetrate deeper anatomy without compromising imaging quality. With four configurable buttons.



## L4-12t-RS

A wide-band linear array for vascular, small parts, superficial, and other MSK images. With four configurable buttons.



## L10-22-RS

A high-frequency linear array for MSK imaging.



## 9L-RS

A linear array specifically designed to diagnose peripheral vascular, vascular access, and musculoskeletal applications.



## C1-5-RS

A curved array supporting imaging of mid to deep structures.



MORE PROBES AVAILABLE.  
CONTACT US FOR MORE INFORMATION.

# Made for Your Point of Care

Venue Family systems are built for a wide range of MSK environments. Inspired by physician needs, these systems are designed for maximum flexibility, adaptability, mobility, and usability.



## Easy to reach probes

Smart cable management puts probes safely up top and cables out of the way and off the floor



## Easy to clean

Smooth and seamless surface supports infection control efforts



## Reliable support

The Venue Family is backed by a multi-year warranty<sup>3</sup>



## Long operation

Batteries can provide active scan times of up to four hours



## Robust

A durable screen, bumpers and multi-purpose handles protect against bumps, bangs, and slashes

## Easy to move

Sleek footprint and big wheels for nimble maneuvering.



## Musculoskeletal Care

# 3 systems. 1 shared platform. For Your Point of Care

Wherever you perform musculoskeletal ultrasound, there is a Venue system designed to meet your needs. Learn more about the members of the Venue Family with this side-by-side comparison.



	Venue	Venue Go	Venue Fit
<b>Portability</b>	Adjustable cart base	Unit detaches from adjustable cart and allows for use on table top or standard VESA® connection	Unit detaches from adjustable cart and allows for use with kickstand or standard VESA connection
<b>Battery life</b> <small>(scan time)</small>	Up to 4 hours	Up to 2 hours	Up to 1 hour
<b>Monitor size</b>	19-in. multi-touch, high-resolution color LCD	15.6-in. multi-touch, high-resolution color LCD	14-in. multi-touch, high-resolution color LCD
<b>Ratio</b>	5:4	16:9	16:9
<b>Active probe ports</b>	4	3	2
<b>Footprint of cart</b>	19.4-in. wide x 21.4-in. deep	19.9-in. wide x 18.9-in. deep	18.7-in. wide x 18.7-in. deep
<b>Weight of unit</b> <small>(off cart)</small>	N/A	13.9 lbs.	12 lbs.





\* Supporting evidence in DOC2374294 - Venue R3 DRS Venue-View VRS Rev 5 (Test 19776)

1. Supporting evidence for Venue (at 39% larger) and Venue Go (at 18% larger) is documented in DOC2391130. Supporting evidence for Venue Fit (at 18% larger) is documented in DOC2454794.
2. Claims based on data collected in cNerve reading study and based on study done Identifying anatomical structures on ultrasound: assistive artificial intelligence in ultrasound-guided regional anesthesia—27 November 2020 Synopsis. Supporting study documentation:
  - cNerve Study May 2022.docx
  - cNerve study Results.xlsx
3. Please consult your local GE Healthcare representative for warranty term information in your region.

© 2022 GE - All rights reserved.

GE reserves the right to make changes in specifications and features shown herein, or discontinue the product described at any time without notice or obligation. GE, the GE monogram, Venue, Venue Go, and Venue Fit are trademarks of GE. GE Healthcare, a division of GE.